

# SafeRoute configuration software

Software manual

060325 45532/17563 - 2024-10

**EN**

# Table of contents

<b>1</b>	<b>Information about this document</b>	<b>3</b>
1.1	Contents and purpose	3
1.2	Target group	3
1.3	Other applicable documents	3
1.4	Documents storage	3
1.5	Abbreviations	3
1.6	Symbols used	4
	1.6.1 Hazard categories	4
	1.6.2 Symbols	4
<b>2</b>	<b>Safety</b>	<b>4</b>
2.1	Intended use	4
2.2	General safety instructions	4
<b>3</b>	<b>Product description</b>	<b>5</b>
3.1	System requirements	5
3.2	Parameterizable components	5
	3.2.1 SafeRoute Control Unit SCU-DR	5
	3.2.2 SafeRoute Control Unit SCU-UP and SCU-TL	5
	3.2.3 Emergency button NT	5
	3.2.4 Control Unit SCMC20	6
	3.2.5 SCMC30 panel extension	6
	3.2.6 SCMC40 panel extension	6
<b>4</b>	<b>Installation</b>	<b>7</b>
<b>5</b>	<b>Starting the software</b>	<b>8</b>
<b>6</b>	<b>Operation</b>	<b>9</b>
6.1	Operating the software	9
6.2	General functions	9
6.3	Selecting the door	10
	6.3.1 Assignment NT -> STV	12
	6.3.2 Cross-door release	13
	6.3.3 Assignment of SCMC20 -> door	14
	6.3.4 Settings for the NT	15
6.4	SCMC20 selection	20
6.5	Program setting	21
<b>7</b>	<b>Replacing safety-relevant components</b>	<b>22</b>
7.1	Replacing NT emergency button (SCU-xx with inserted license card)	22
7.2	Replace emergency button NT (SCU-xx without inserted license card)	22
7.3	Replacing the STV	23

# 1 Information about this document

## 1.1 Contents and purpose

This document contains information and instructions for the installation and operation of the SafeRoute configuration software and supplements the SafeRoute system manuals.

## 1.2 Target group

This document is intended for assembling technicians and service technicians authorized by dormakaba for the installation, operation, maintenance and testing of a SafeRoute system.

## 1.3 Other applicable documents

The following documents belong to the unit's complete documentation and must be observed:

- The SafeRoute System Mini, Basic and Standard system manual
- The SafeRoute System Premium system manual
- The TMS Soft® handbook
- The installed individual components' mounting instructions and documents
- The SafeRoute System Mini, Basic and Standard operation manual
- The SafeRoute System Premium operation manual
- The SafeRoute System inspection log
- The approved components' declaration of conformity

## 1.4 Documents storage

This document and the applicable documents must be handed over to the facility operator. The documents must be kept for the service life of the product and made accessible to the persons responsible for testing and maintenance.

## 1.5 Abbreviations

Abbreviations	Definition
DCW	dormakaba Connect and Work Bus System
NT	Emergency button (SCU-UP or SCU-TL without license card)
SCMC	SafeRoute Central Management Control
SCMC20	Central control panel in a SafeRoute system
SCMC30	Panel extension: Blocking the release
SCMC40	Panel extension: Time delay T2
SCU-xx	SafeRoute Control Unit A SafeRoute system's control unit in three versions: SCU-UP = flush-mounted SCU-TL = in the door terminal STL-G SCU-DR = DIN rail mounting
STV	SafeRoute door lock
UID	Unique address
TMS Soft	Door management software

## 1.6 Symbols used

### 1.6.1 Hazard categories



#### **DANGER**

Describes an imminent danger resulting in serious injury or death.



#### **WARNING**

Indicates a potentially dangerous situation that can lead to serious body injuries or death.

### 1.6.2 Symbols



Application tips, useful information

## 2 Safety

The configuration of escape route security systems must not impede the unhindered escape of persons in the event of danger. Observe the country-specific regulations and guidelines.

### 2.1 Intended use

The SafeRoute configuration software is used exclusively for setting the safety-relevant parameters of SafeRoute systems. The intended use also includes compliance with all information in this document and in the other applicable documents (see also Other applicable documents [► 1.3](#)).

### 2.2 General safety instructions



#### **DANGER**

##### **Danger to life due to blocked escape routes**

Mounted devices and components as well as their settings can prevent people from escaping in an emergency if they are handled improperly.

- Mounting, commissioning, testing and maintenance of the escape route safety system may only be carried out by persons authorized by dormakaba.



Only use SafeRoute configuration software in version 1.0.016 or higher officially released by dormakaba.

## 3 Product description

The SafeRoute configuration software is a supplementary software to the TMS Soft 5.0.xxx and is used exclusively for parameterizing the safety-relevant settings in a SafeRoute system. The software accesses the TMS Soft database and other devices of the SafeRoute System for this purpose. For more information on the components that can be parameterized, please refer to the SafeRoute System Mini, Basic and Standard system manual as well as the SafeRoute System Premium system manual (see Other applicable documents ► 1.3]).



This document refers to SafeRoute configuration software in the current version 1.0.020. When using the previous version 1.0.018, some of the functions described here may not be available. dormakaba recommends always using the current version of the configuration software. The current software version is available under the following link (Product downloads > Software):

[https://www.dormakaba.com/gb-en/offering/products/door-hardware/emergency-exit-systems/tms-soft--do\\_3005](https://www.dormakaba.com/gb-en/offering/products/door-hardware/emergency-exit-systems/tms-soft--do_3005)

### 3.1 System requirements

- Door management software TMS Soft®
- Computer with Windows 10 operating system
- Processor with at least 1 GHz
- At least 3 GB RAM
- At least 5 GB free hard disk space

### 3.2 Parameterizable components

#### 3.2.1 SafeRoute Control Unit SCU-DR

The SCU-DR with the inserted license card is the SafeRoute system's control unit. Up to four emergency buttons (SCU-UP or SCU-TL without license card) and up to 4 STV xxx door locks can be connected. Only the central alarm system mode can be parameterized on the SCU-DR, which acts on all connected STV xxx door locks.

#### 3.2.2 SafeRoute Control Unit SCU-UP and SCU-TL

The SCU-UP or the SCU-TL with the inserted license card is the SafeRoute system's control unit. Up to four emergency buttons (SCU-UP or SCU-TL without license card) and up to 4 STV xxx door locks can be connected.

#### 3.2.3 Emergency button NT

A SCU-UP or the SCU-TL without inserted license card can be connected as emergency button NT to a SafeRoute Control Unit SCU-xx via the DCW bus.

### 3.2.4 Control Unit SCMC20

The SCMC20 central control panel can be used to release up to 64 SafeRoute escape route doors in a safety-relevant manner (central emergency button). Requirements:

- The Premium license card is inserted in the escape route doors' SafeRoute Control Units SCU-xx.
- All devices must be LON-networked and assigned via TMS Soft.
- The escape route doors are connected and correctly assigned via LON (see Assignment of SCMC20 -> door [▶ 6.3.3](#)] and/or SCMC20 selection [▶ 6.4](#)]).
- Without SCMC30 and 40, assignment is not required via LON.

This function corresponds to EN 13637 and is subject to regional building law.

### 3.2.5 SCMC30 panel extension

The emergency buttons on the escape route doors can be deactivated with the SCMC30 panel extension. Requirements:

- The correct assignment via LON binding is required.
- The escape route doors can be released via the Control Unit SCMC20.



This function corresponds to EN 13637 and is subject to regional building law. Blocking the release is not permitted within the scope of the EltVTR. In properties with special requirements, approval can be granted in the form of a consent in individual cases (ZiE) by the upper building supervisory board.

---

### 3.2.6 SCMC40 panel extension

The SCMC40 panel extension can be used to activate the T2 time-delayed release on the escape route doors. Requirements:

- The correct assignment via LON binding is required.
- The escape route doors can be released via the Control Unit SCMC20.
- The escape route doors have the T1 time-delayed release function.



This function corresponds to EN 13637 and is subject to regional building law. A delayed release of the local emergency buttons is not permitted within the scope of EltVTR. In properties with special requirements, approval can be granted in the form of a consent in individual cases (ZiE) by the upper building supervisory board.

---

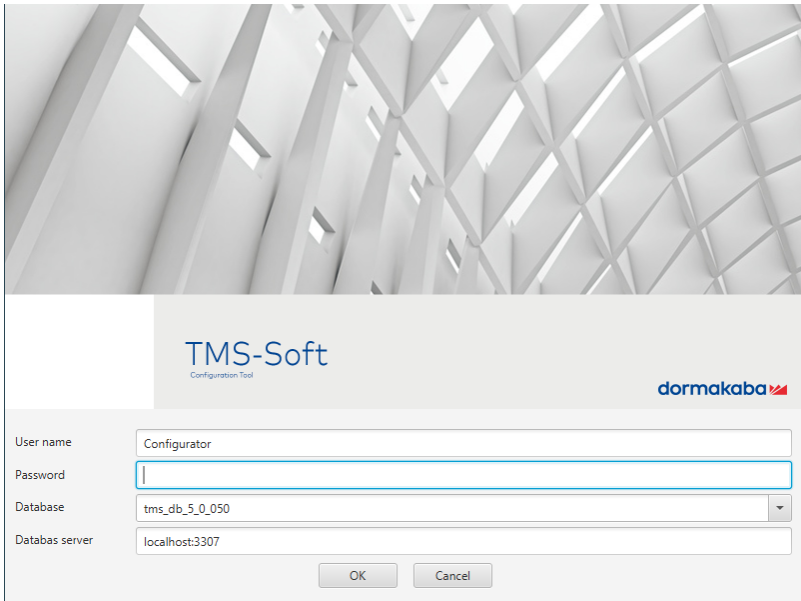
## 4 Installation

The software is delivered on a USB stick. The USB stick has been scanned for viruses at the factory to ensure that it is safe. dormakaba will not be liable for compensation in the event of problems arising from installing the software on a computer.

1. Double-click the setup file "SafeRoute\_Windows\_Setup\_x\_x\_xxx.exe" (x\_x\_xxx = version, example: 1\_0\_018).
2. Select the desired language version.
3. Accept the license agreement.
4. Select a directory for installation or confirm the suggested installation directory.
5. Confirm the Start menu shortcut or select a folder.
6. Click "Installieren" ("Install").
7. Click on "Fertigstellen" ("Finish") to finish the installation.

## 5 Starting the software

1. Start the SafeRoute configuration software from the dormakaba Start menu.  
⇒ The login screen appears:



2. The first login takes place with the user name "Configurator".
3. In the Password field, enter "dorma".
4. In the "Datenbank" ("Database") field, enter the name of the database used to start TMS Soft®.
5. If the database is located on the same computer as TMS Soft®, enter "localhost:" in the "Datenbank Server" ("Database Server") field. If the database is located on another computer, in the "Datenbank Server" ("Database Server") field, specify the IP address of that computer.
6. Enter the port address "3306" for MySQL or "3307" for MariaDB after the colon in the "Datenbank Server" ("Database Server") field.
  - ⇒ MySQL is used up to TMS Soft® 5.0.038. Either MySQL or MariaDB can be used during installation with TMS Soft® 5.0.040 or higher.
  - ⇒ The default setting during installation is MariaDB.
7. Click on OK.
  - ⇒ The user is prompted to enter a new password.



The new password can also be the old password, but this may result in being prompted to change the password again during the next login. The prompt always appears when the user is "Configurator" and the password is "dorma". If a new password is assigned, an additional password change is only possible in TMS Soft®.

- ⇒ The settings are saved and will be available the next time you log in.



## 6 Operation

### 6.1 Operating the software

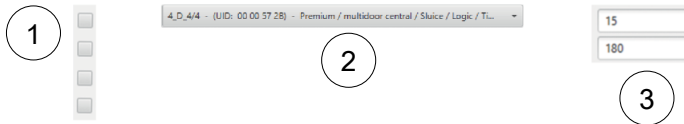


Do not leave the SafeRoute configuration software permanently open.

Exit the software after the configuration has been completed.

Finally check the door functions.

The SafeRoute configuration software is operated using the control elements listed below:



- 1 Check boxes:** The individual check boxes can be optionally activated or deactivated by clicking on them. Several check boxes can be activated or deactivated in a group field.
- 2 Pull-down menu:** Various selection options are available after clicking on the field.
- 3 Parameter field:** The desired parameters can be entered here within the permitted limits. It is not possible to enter numbers that are not permitted (e.g. decimal numbers).

### 6.2 General functions

For security reasons, the application ends automatically after 10 minutes. The time can be set in config.ini with the "AlertTimeInMinutes" parameter. A note to the user checking whether the application should be closed appears 1 minute before it is closed automatically. If the user does not respond, the application closes.

## 6.3 Selecting the door

All escape route doors from the TMS Soft database can be selected in the pull-down menu. The UID and the license of the connected SafeRoute Control Unit SCU-xx is displayed for each door.

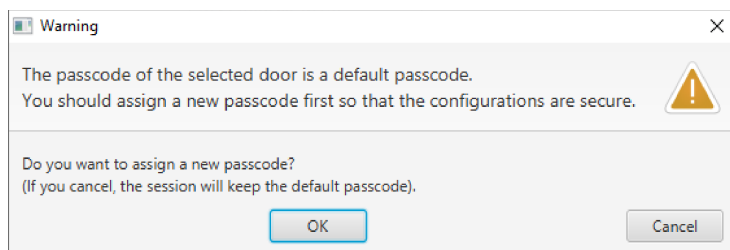


Only devices that are correctly set up with TMS Soft can be parameterized and are able to communicate with TMS Soft. During parameterization with the SafeRoute configuration software, TMS Soft and the TMS-PC gateway must be running.

Various options are available via the buttons to the right of the pull-down menu:

- 1 Reload the door.
- 2 Assign the current passcode (see Changing the passcode [▶ 6.3.4.7](#)) to a device with default passcode.
- 3 Show assignment table of UID of STV xx, SCU-xx and SCMCxx.

The table is purely informative and shows per door all STV door locks, SCU-xx control panels, SCU-xx emergency buttons and SCMC20 assigned to each other with their respective address (address 1-4 for emergency buttons, door locks and SCMC20 units; address 0 always corresponds to the control panel). If a device is selected, the UIDs of the assigned components are read out directly. The processing progress is displayed. By clicking "Türnamen anzeigen" ("Show door names"), the system changes from the UID to door names. If a passcode has not yet been assigned for the locking elements, the following window appears with a request to assign a passcode.



At the factory, all locking elements have the passcode "123456". The passcode must be 6 digits long and can only contain numbers. It is not possible to change safety-relevant parameters with the SafeRoute configuration software without a valid passcode. The passcode must therefore be handed over to the facility operator together with the inspection log.



If the passcode is lost, restoring access to the safety-relevant parameters is only possible with a new commissioning (8 second reset + 12 second reset). This resets all parameter settings to the factory settings (see Mini, Basic, Standard system manual).

## 6.3.1 Assignment NT -> STV

1. Click on the "Zuordnung NT -> STV" ("Assignment NT -> STV") tab in the following window to select the emergency buttons to be assigned:

The screenshot shows the 'SafeRoute-Konfigurationssoftware' interface. The main window has a tab labeled 'Zuordnung NT -> STV'. It contains several panels:
 

- EB (available):** A list of emergency buttons with their UIDs: NT0 (UID: 00 57 3F), NT1 (UID: 00 56 FE), and NT4 (UID: 00 57 29).
- EB (allocated):** An empty list for buttons already assigned.
- STV:** A list of door systems: STV1 (UID: 00 88 C2) and STV4 (UID: 00 88 EC).
- Cross-door unlock (allocated):** A list for cross-door unlock functions, currently empty.

 Navigation buttons like '<-->' and '<-->' are used to move items between the available and allocated lists. A 'Submit' button is at the bottom right.
   
 Below the main window, a status window displays the following log:
 

```

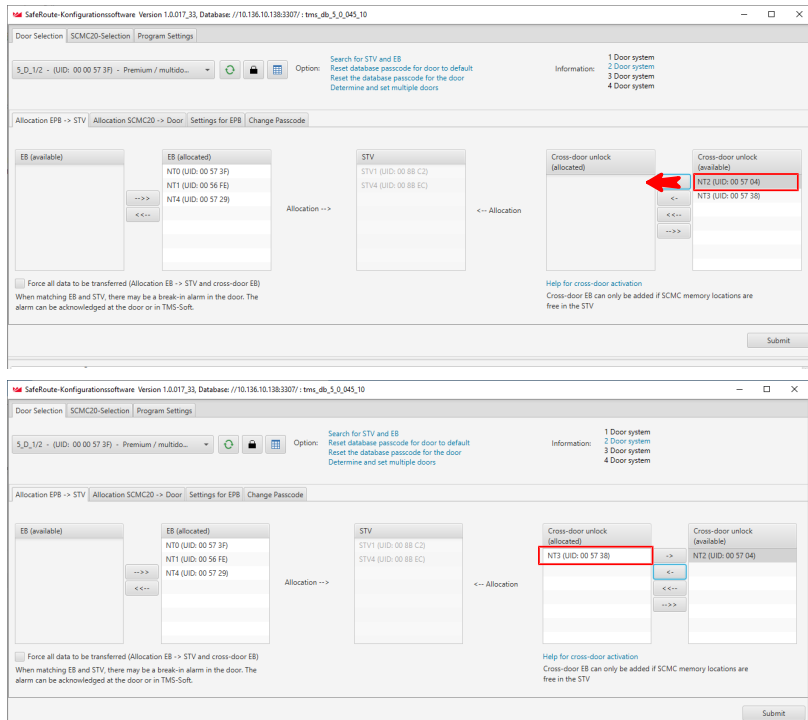
STATUS: Reading NT-Table - Position SCMC4 -> Hex-UID: 00 00 00
STATUS: ----- (00 57 29) NT 4
STATUS: Reading NT-Table - Position STV1 -> Hex-UID: 00 88 C2
STATUS: Reading NT-Table - Position STV2 -> Hex-UID: 00 00 00
STATUS: Reading NT-Table - Position STV3 -> Hex-UID: 00 00 00
STATUS: Reading NT-Table - Position STV4 -> Hex-UID: 00 88 EC
STATUS: Reading NT-Table - Position SCMC1 -> Hex-UID: 00 00 00
STATUS: Reading NT-Table - Position SCMC2 -> Hex-UID: 00 00 00
STATUS: Reading NT-Table - Position SCMC3 -> Hex-UID: 00 6A B8
STATUS: Reading NT-Table - Position SCMC4 -> Hex-UID: 00 00 00
STATUS: ----- (00 57 3F) UP-Central
STATUS: Reading NT-Table - Position STV1 -> Hex-UID: 00 88 C2
STATUS: Reading NT-Table - Position STV2 -> System overload, trying again to read data
STATUS: Reading NT-Table - Position STV3 -> Hex-UID: 00 00 00
STATUS: Reading NT-Table - Position STV4 -> Hex-UID: 00 88 EC
STATUS: Reading NT-Table - Position SCMC1 -> Hex-UID: 00 00 00
STATUS: Reading NT-Table - Position SCMC2 -> Hex-UID: 00 00 00
STATUS: Reading NT-Table - Position SCMC3 -> Hex-UID: 00 6A B8
STATUS: Reading NT-Table - Position SCMC4 -> Hex-UID: 00 00 00
STATUS: No errors were found when checking the assignment tables (NT/STV/SCMC-Memory locations).
```

- ⇒ The assigned SafeRoute door locks are displayed in the "STV" list.
  - ⇒ The UIDs of all unassigned SafeRoute emergency buttons are displayed in the "NT(verfügbar)" ("NT (available)") list.
  - ⇒ The UIDs of all assigned SafeRoute emergency buttons are displayed in the "NT (zugeordnet)" ("NT (assigned)") window.
2. Click on "-->" to assign all the emergency button NT's UIDs or click on "<--" to remove all of the emergency button NT's UIDs.
    - ⇒ Only all available emergency buttons can be added or removed at a time because these emergency buttons are located at 1 door. All emergency buttons are either assigned or removed.
  3. Click on "Übertragen" ("Transfer") to send the changed settings.

## 6.3.2 Cross-door release

The cross-door release means that every emergency button can be assigned to the other doors within a multi-door application. This is enabled with the cross-door release.

1. Select the available emergency button and assign it for release.



⇒ Cross-door emergency buttons can only be added if SCMC storage spaces in the STV are free.

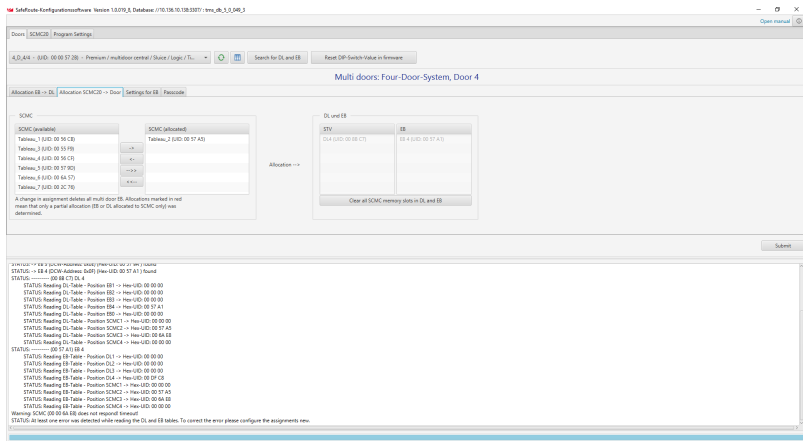


If SCMC20s are assigned and should also be defined as cross-door emergency buttons, the SCMC20s must be assigned first. In the second step, the cross-door emergency buttons are assigned.

### 6.3.3 Assignment of SCMC20 -> door

Panels where an error is detected are displayed in the "SCMC (zugeordnet)" ("SCMC (assigned)") and shown in red.

1. Click on the "Zuordnung von SCMC20" ("Assignment of SCMC20") tab to select the control panel to be assigned:



- ⇒ The assigned SafeRoute door locks are displayed in the "STV" list.
- ⇒ The assigned SafeRoute emergency buttons are displayed in the "NT" list.
- ⇒ In the "SCMC (verfügbar)" ("SCMC (available)") list, the UIDs of all unassigned SCMC20 panel inserts (central emergency button) are displayed.
- ⇒ In the "SCMC (zugeordnet)" ("SCMC (assigned)") list, the UIDs of all assigned SCMC20 panel inserts (central emergency button) are displayed.
- ⇒ If an error occurred during the transfer, the SCMC is displayed in red.



A maximum of four SCMC20 units can be assigned to a door.

An SCMC20 has a DIP switch to set the address. In order to assign more than one SCMC20 to a door, the SCMC20 addresses must be different (see SCMC20's mounting instructions). The SCMC20 units are assigned to the SCMC storage space in a similar way to the set address.

2. Click "-->" to assign all UIDs of the SCMC20 emergency buttons or click "<--" to remove all UIDs of the SCMC20 emergency buttons.
3. Click on "->" to assign individual UIDs, or click "<-" to remove individual UIDs.
4. Click on "Übertragen" ("Transfer") to send the changed settings.

If an old device is used to replace a device, it is possible that an STV or an emergency button has been installed that contains an SCMC that is no longer available in the memory allocations.

To delete the SCMC assignment in STV and NT, click on the button "Delete all SCMC assignments in STV and NT".

### 6.3.4 Settings for the NT



These settings are made directly in the emergency button's hardware and cannot be deactivated by resetting, new commissioning or firmware update, but only by the SafeRoute configuration software.

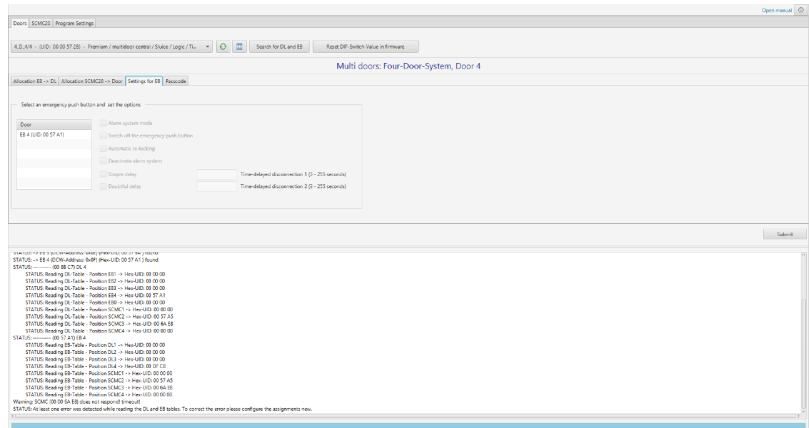
In the event of any changes of use, ensure that the setting does not remain unintentionally activated.

For devices with firmware 1.9 (SCU-xx) and 1.5 (STV xxx) it is possible to delete the described safety parameters (6.4) even without using the configuration software by means of a 20-second reset.



For operation of the SCMC20/30/40, all connected SCU units must have at least firmware version 1.7.000.

- Click on the "Einstellungen zum NT" ("Emergency button settings") tab to display the parameters of the individual emergency buttons NT and to make various settings for the respective emergency button.
  - In the "NT" list, the assigned emergency buttons NT are displayed.
  - "NT 0" is the emergency button of the SafeRoute Control Unit SCU-xx with inserted license card.
  - "NT 1-4" are the additional emergency buttons connected to SafeRoute Control Unit SCU-xx via DCW bus.



- Select the emergency button by clicking on it.

- The current parameters are read from the emergency button and displayed. The parameters are available depending on the license card.

#### 6.3.4.1 Automatic relocking

If this option is activated, the alarm is automatically acknowledged after 60 seconds. The electrical locking device is automatically reactivated if a door is not opened after the emergency button has been pressed. This function can only be activated if 2 independent messages transmit the door status (open/closed) to the control unit. These contacts are already integrated in the STV 1xx. For STV 2xx, 5xx and STV-A, an additional magnetic contact must be set and connected according to the respective mounting instructions.

- ✓ The Basic, Standard or Premium license card is inserted in the escape route doors' SafeRoute Control Units.
- 1. Click on the "Automatische Wiederverriegelung" ("Automatic relocking") check box to activate or deactivate the function.
- 2. Click on "Übertragen" ("Transfer") to send the changed setting.



This function corresponds to EN 13637 and is subject to regional building law. Automatic relocking is not permitted within the scope of the EltVTR. In properties with special requirements, approval can be granted in the form of a consent in individual cases (ZiE) by the upper building supervisory board.

#### 6.3.4.2 Switch off the emergency button

This function activates the ability to "Block the release" in accordance with EN 13637. This cannot be used without the SCMC30 panel extension.

- ✓ LON binding is required (see Premium system manual).
- ✓ The Premium license is inserted in the escape route doors' SafeRoute Control Units SCU-xx.
- ✓ The Control Unit SCMC20 is extended with the SCMC30.
- 1. Click on the "Abschalten des Nottasters" ("Switch off the emergency button") checkbox to activate or deactivate the function.
- 2. Click on "Übertragen" ("Transfer") to send the changed setting.



This function corresponds to EN 13637 and is subject to regional building law. Blocking the release is not permitted within the scope of the EltVTR. In properties with special requirements, approval can be granted in the form of a consent in individual cases (ZiE) by the upper building supervisory board.



### 6.3.4.3 Alarm system mode

By activating this option, the alarm system runs in the "b" mode, i.e. when the alarm system input is triggered, an acoustic alarm is triggered. If active delay timers are canceled, the doors are released directly. Only the blocked release will be cancelled. The doors remain locked and can be released locally.

By deactivating this option, the alarm system runs in the "a" mode, i.e. when the alarm system input is triggered, an acoustic alarm is triggered. All emergency open delay timers and the blocked release are deactivated. The locking systems concerned are released directly.

- ✓ The Basic, Standard or Premium license card is inserted in the escape route doors' SafeRoute Control Units SCU-xx.
- 1. Click on the "Alarmsystem-Modus" ("Alarm system mode") check box to activate or deactivate the function.
- 2. Click on "Übertragen" ("Transfer") to send the changed setting.



#### DANGER

##### **Danger to life due to blocked escape routes**

Up to and including SafeRoute SCU unit firmware version 1.6.000, the "alarm system mode" activates a function that deviates from EN 13637. In this function, only an alarm is signaled when an alarm system is triggered. Running time delays T1 and T2 as well as the blocked release are not canceled.

- As of SafeRoute SCU unit firmware version 1.7.000, the "Alarm system mode" parameter activates the "b" mode normatively defined in EN 13637.
- If an EN 13637-compliant application of mode "b" is desired, all SCU units in the system must be equipped with firmware version 1.7.000 or higher.
- Please contact dormakaba if a firmware update is required for this purpose.



The premium license is a prerequisite for the "Gespererte Freigabe" ("Blocked release") or "Not-Offen-Verzögerung" ("Emergency open delay").

### 6.3.4.4 Disable alarm system

By activating this option (check mark ticked), the SCU-UP/SCU-TL (In 2) input is separated from the alarm system function and enables the input to be parameterized in the same way to In 1. By deactivating this option (check mark not ticked), the alarm system input of SCU-UP/SCU-TL (In 2) releases the connected electrical locking devices in a safety-relevant manner when the alarm system is triggered. The input is monitored for short-circuit and open-circuit (single-fault safety). The switch for the alarm system on the SCU-UP/SCU-TL must be configured for the selected function according to the mounting instructions.

- ✓ The Basic, Standard or Premium license card is inserted in the escape route doors' SafeRoute Control Units SCU-UP/SCU-TL.
- 1. Click on the "Alarmsystem deaktivieren" ("Deactivate alarm system") check box to activate or deactivate the function.
- 2. Click on "Übertragen" ("Transfer") to send the changed setting.



The S5 switch on the SCU-UP/SCU-TL must be in position "B".

"B" = alarm system not connected (deactivated), see SCU-UP/STL-G mounting instructions.

### 6.3.4.5 Single delay

By activating this option, the connected electrical locking devices are only released in a safety-relevant manner after the set delay time has elapsed when an emergency button is pressed and an acoustic and visual alarm is triggered.



This function corresponds to EN 13637 and is subject to regional building law. A delayed release of the local emergency buttons is not permitted within the scope of EltVTR. In properties with special requirements, approval can be granted in the form of a consent in individual cases (ZiE) by the upper building supervisory board.

- 
- ✓ In the escape route doors' SafeRoute Control Units SCU-xx, the Basic or Standard license card is inserted with the additional application "Zeitverzögerung T1" ("Time delay T1") or the Premium license card is inserted.
  - 1. Click on the "Einfache Verzögerung" ("Single delay") check box to activate or deactivate the function.
  - 2. Enter the delay time T1 in seconds in the field behind the checkbox. The minimum value is 3, the maximum value 255.
  - 3. Click on "Übertragen" ("Transfer") to send the changed setting.



The maximum value for the delay time T1 according to EN 13637 is  $\leq 15$  seconds.

---

#### 6.3.4.6 Double delay

By activating this option, the connected electrical locking devices are only switched off in a safety-relevant manner after the set delay time T1 has elapsed when an emergency button is pressed and an acoustic and visual alarm is triggered. If the delay time T1 is running, the delay time can be extended once by the timer T2 via the panel extension SCMC40 up to the release.



This function corresponds to EN 13637 and is subject to regional building law. A delayed release of the local emergency buttons is not permitted within the scope of EltVTR. In properties with special requirements, approval can be granted in the form of a consent in individual cases (ZiE) by the upper building supervisory board.

- ✓ The Premium license is inserted in the escape route doors' SafeRoute Control Units SCU-xx.
  - ✓ The Control Unit SCMC20 is extended by the SCMC40.
  - ✓ All doors are LON-networked.
  - ✓ The network variable "Heartbeat" from SCMC20 is programmed to the doors according to the manual via LON binding (see Premium System manual).
1. Click on the "Zweifache Verzögerung" ("Double delay") check box to activate or deactivate the function.
  2. Enter the delay time T2 in seconds in the field behind the checkbox. The minimum value is 3, the maximum value 255.
  3. Click on "Übertragen" ("Transfer") to send the changed setting.



The maximum value for the delay time T2 according to EN 13637 is  $\leq 180$  seconds.

#### 6.3.4.7 Changing the passcode

1. Click on the "Passcode ändern" ("Change passcode") tab to set a specific passcode and assign this passcode to the door.
2. Click "OK" to assign a new passcode or click "Cancel" to continue with the default passcode.



At the factory, all locking elements have the passcode "123456". The passcode must be 6 digits long and can only contain numbers. It is not possible to change safety-relevant parameters with the SafeRoute configuration software without a valid passcode. The passcode must therefore be handed over to the facility operator together with the inspection log.

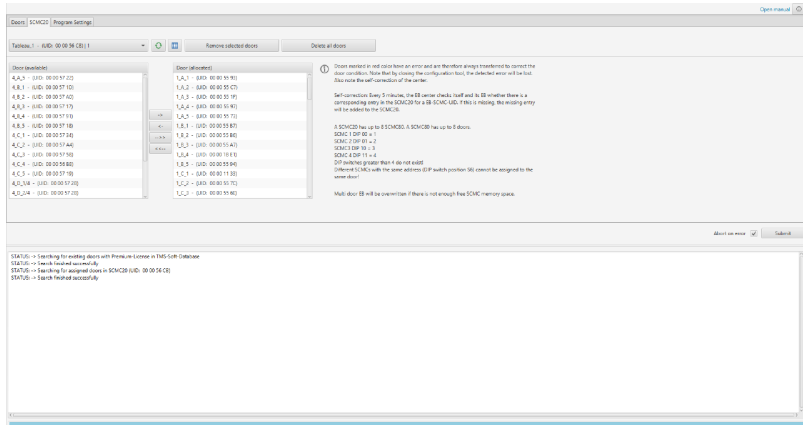


If the passcode is lost, restoring access to the safety-relevant parameters is only possible with a new commissioning. This resets all parameter settings to the factory settings (see Mini, Basic, Standard system manual).

## 6.4 SCMC20 selection

Doors where an incomplete assignment is detected are displayed in the list "SCMC (zugeordnet)" ("SCMC (assigned)") and shown in red.

1. Click on the „SCMC-Auswahl“ ("SCMC selection") tab to change the assignment of SCMC20 doors.
2. Set the "Bei einem Fehler abbrechen" ("Abort in case of an error") if it is desired that an error is aborted and the process should not be continued with the next door. **Abbrechen** (Cancel) refers to the "Übertragen" ("Transfer") button (transfer of the assigned doors).



- ⇒ All Premium license doors and LON doors that exist in the TMS Soft database are listed in the "Tür (verfügbar)" ("Door (available)") list.
- ⇒ All Premium license doors and LON doors that are already assigned to an SCMC20 are listed in the "Tür (zugeordnet)" ("Door (assigned)") list.
- ⇒ Following the transfer, the doors remain as configured in the lists ("Tür verfügbar", "SCMC zugeordnet") ("door available", "SCMC assigned").
- ⇒ Incorrect transfers are shown in red; correct transmissions are shown green.

⇒ An attempt is always made to transfer red-marked doors.



A short-term communication problem can be resolved by clicking on "Übertragen" ("Transfer").

If the error persists (technical problem): check that everything is connected correctly.



#### Conditions for displaying the available list:

The door is assigned to a LON module in TMS Soft.

A door that is present in the SCMC20 but is not present in the TMS Soft database is displayed in the "Tür zugeordnet" ("Door assigned") list called "Unbekannt - (UID der Tür)" ("Unknown - (door UID)"). In this case, reset the SCMC20 by means of an 8-second reset (on the rear micro-button) or delete the problematic door in TMS Soft from the visualization.

A door that is present in the SCMC20 but has not been assigned a LON module in TMS Soft is displayed in the "Tür zugeordnet" ("Door assigned") list with the designation "Inaktiv - (UID der Tür)" ("Inactive - (UID of the door)").

This problem must be resolved in TMS Soft.

Each SCMC20 can manage up to 8 SCMC80s. Each SCMC80 can visualize and control up to 8 doors. To set the DIP switches, see the SCMC20 mounting instructions.

Different SCMC20 units with the same address (DIP switch position S6) cannot be assigned to **the same** door.

The "Markierte Türen entfernen" ("Remove marked doors") button deletes selected doors from the SCMC20. To remove all doors from the SCMC20 at once, click the button "Alle Türen entfernen" ("Remove all doors").

## 6.5 Program setting

On this tab, three functions are available:

- Language selection (German or English)
- Reload door selection and SCMC20 selection from the database – Run.
- Display all doors or only functioning doors in the "Türauswahl" ("Door selection").

## 7 Replacing safety-relevant components

With the SafeRoute configuration software, safety-relevant components can be replaced without the otherwise required new commissioning.



If safety-relevant components of a door are replaced, the assignment of all SCMC20 (if available) to the respective door must then be reset (see SCMC20 selection [▶ 6.4](#)).



Newer devices can also be put into operation without loss of individual parameterization, so that the configuration software does not have to be used for the replacement of emergency buttons and door locks. If this function is to be used, it must be ensured that all safety devices within the DCW bus have at least the firmware version 1.9 (emergency buttons, SCU control panels, STL-G terminals) and 1.5 (STV door locks, STV-A adapters) (see system manual).

### 7.1 Replacing NT emergency button (SCU-xx with inserted license card)

1. In this case, the system must be restarted (see SafeRoute System Mini, Basic and Standard system manual).
2. Assignments and settings must be reset, see chapter Operating the software [▶ 6.1](#).

### 7.2 Replace emergency button NT (SCU-xx without inserted license card)

1. Replace the SCU-xx. Accept the DCW address of the replaced component (DIP switch). Observe the relevant mounting instructions, safety instructions and system manuals.
2. Start SafeRoute configuration software.
3. Select the relevant door in the pull-down menu under "Türauswahl" ("Door selection").




When the door is read out, there will be a message if several emergency buttons have the same address. It is not enough to change the physical address on the emergency button's DIP switch as the address in the device's memory is not changed.

To solve the problem, click on the button "DIP-Schalter-Wert in Firmware neu setzen" ("Reset DIP switch value in firmware"). Each emergency button is briefly switched to configuration mode. This resets the address in the device.

- ⇒ In the "NT zugeordnet" ("NT assigned") list, the UUIDs of all SafeRoute emergency buttons assigned to this door are displayed, i.e. including the UUID of the SCU-xx removed during replacement.
  - ⇒ In the "NT verfügbar" ("NT available") list, the UUIDs of all SafeRoute emergency buttons available for this door are displayed, i.e. the UUID of the SCU-xx added during replacement.
4. Click "<<--" to remove all UUIDs in "NT zugeordnet" ("NT assigned").
    - ⇒ Now only the UUIDs of the SafeRoute emergency buttons available in the system are displayed in the "NT verfügbar" ("NT available") list. The SCU-xx removed during replacement is no longer listed.
  5. Click on "-->" to reassign all available SafeRoute emergency buttons.

6. Click on "Übertragen" ("Transfer") to send the changed setting.
7. Repeat steps 4-6 for each affected door.
8. Document the replacement performed for all affected doors and devices in the unit's inspection log.
9. If the replaced emergency button is also controlled via an SCMC20, it must be assigned to the SCMC20.

Also see about this

 Assignment NT -> STV [▶ 12](#)

## 7.3 Replacing the STV

1. Replace the STV. Take over the DCW address of the replaced STV (DIP switches). Observe the relevant mounting instructions, safety instructions and system manuals. A 8-second reset on the STV is required.
2. Start SafeRoute configuration software.
3. Click on the "Zuordnung NT" ("Assignment NT") tab (see Assignment NT -> STV [▶ 6.3.1](#)).
4. Select the relevant door in the pull-down menu under "Türauswahl" ("Door selection").
  - ⇒ No UIDs from the SafeRoute emergency buttons are displayed in the "NT zugeordnet" ("NT assigned") list because no UIDs are yet assigned to the replacement device at this door.
  - ⇒ In the list "NT verfügbar" ("NT available"), the UIDs of all SafeRoute emergency buttons available for this door are displayed, i.e. the UIDs of the SafeRoute emergency buttons that were assigned to the replaced STV.
5. Click on "-->>" to reassign all available SafeRoute emergency buttons.
6. Click on "Übertragen" ("Transfer") to send the changed setting.
7. Repeat steps 5-6 for each affected door.
8. Document the replacement performed for all affected doors and devices in the unit's inspection log.
9. If the replaced emergency button is also controlled via an SCMC20, it must be assigned to the SCMC20.

To solve the above-mentioned problem of irregular DIP switch settings without a complete reconfiguration of the unit, click on the button "DIP-Schalter-Wert in Firmware neu setzen" ("Reset DIP switch value in firmware").




---

All emergency buttons and STV are determined. The DIP switch value saved in the device is overwritten with the DIP switch position set on the device.

---

060325 45532/17563 - 2024-10  
Copyright © dormakaba 2024



[www.dormakaba.com](http://www.dormakaba.com)

dormakaba Deutschland  
GmbH  
DORMA Platz 1  
58256 Ennepetal  
Germany  
+49 2333 793-0

[www.dormakaba.com](http://www.dormakaba.com)